

West

East

Dial Plate

Northern Hemisphere

Northern Hemisphere

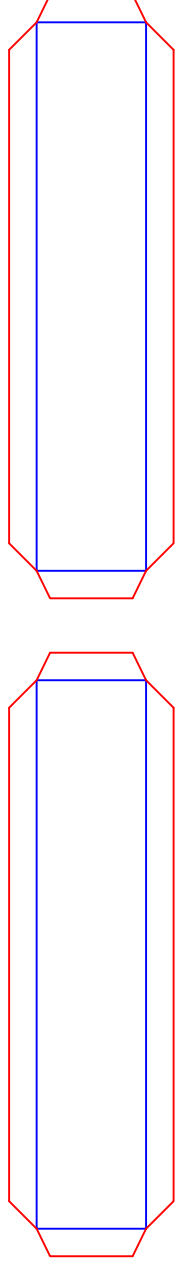
Northern Hemisphere

Northern Hemisphere

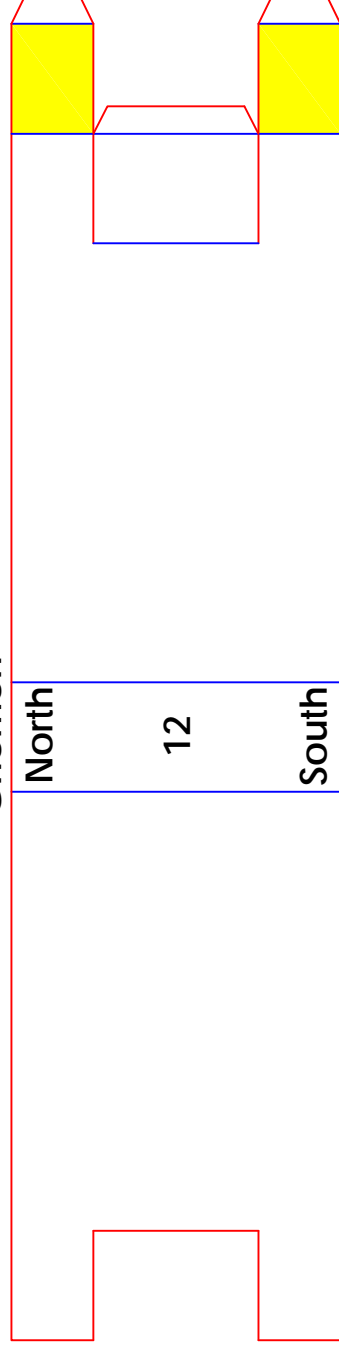
West The Sundial Primer - Equatorial Ring Sundial East

Red lines - cut
Blue lines - fold

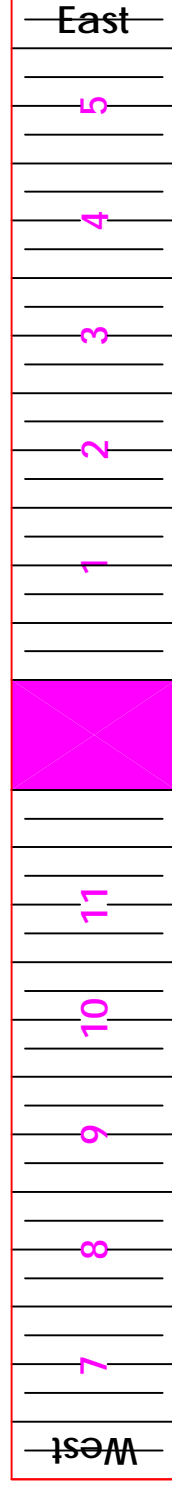
Gnomon End Caps



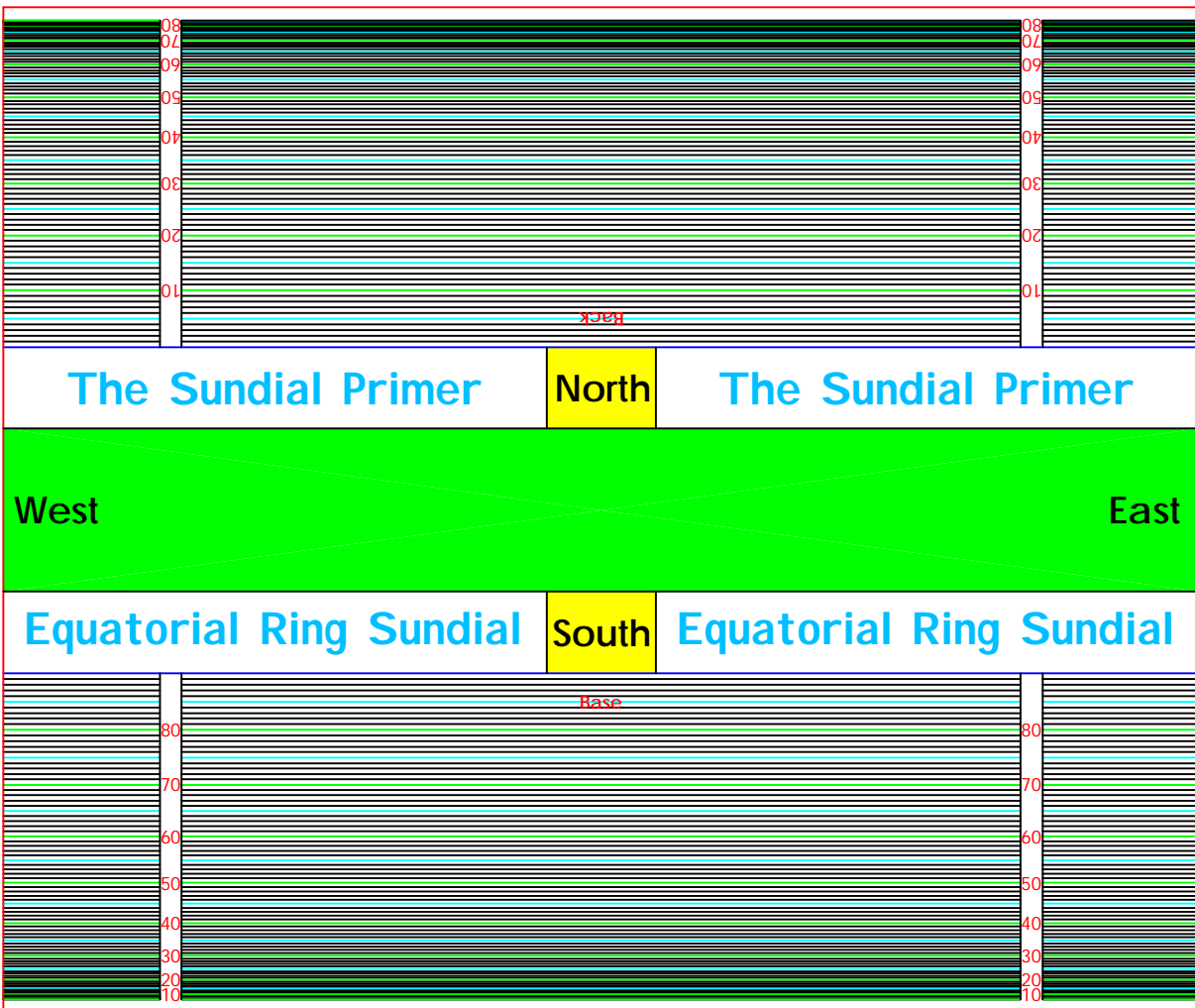
Gnomon



Hour Lines Plate



1. Cut the sundial and gnomon out following the red lines.
2. Fold back all the tabs and faces along the blue lines.
3. Glue the gnomon together including the end caps.
4. Glue the dial plate together. The narrow strips will provide a place to mount the hour lines plate.
5. Glue the hour lines plate to the dial plate.



1. Cut the sundial base out around the outside following the red lines.
2. Cut the back along your latitude line.
3. Fold back the base at your latitude line and cut about 1/4" outside and parallel to the fold. This will make a tab for gluing the back to.
4. Fold back along the remaining blue lines.
5. Before completing the base glue on the dial plate. Make sure the green rectangles are aligned.
6. Glue the gnomon to the base. Make sure the yellow rectangles are aligned.
7. Finish gluing the sundial base together.