



terminal            login  
shell

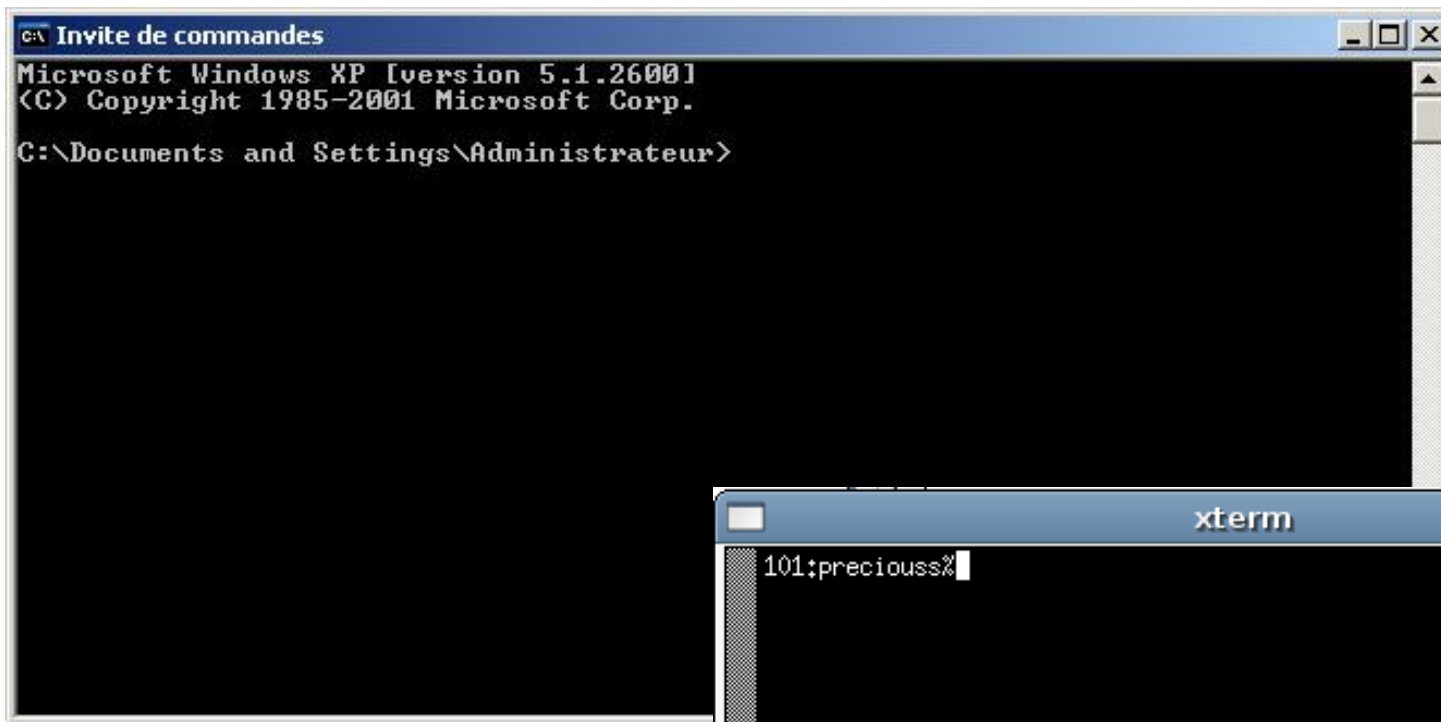
telnet              ssh  
ftp                 sftp  
rcp                 scp

X11 / X Windows System/ Xorg  
remote desktop (RDP)  
VNC (Virtual Network Computing)  
NX (NoMachine)

aplikacje internetowe

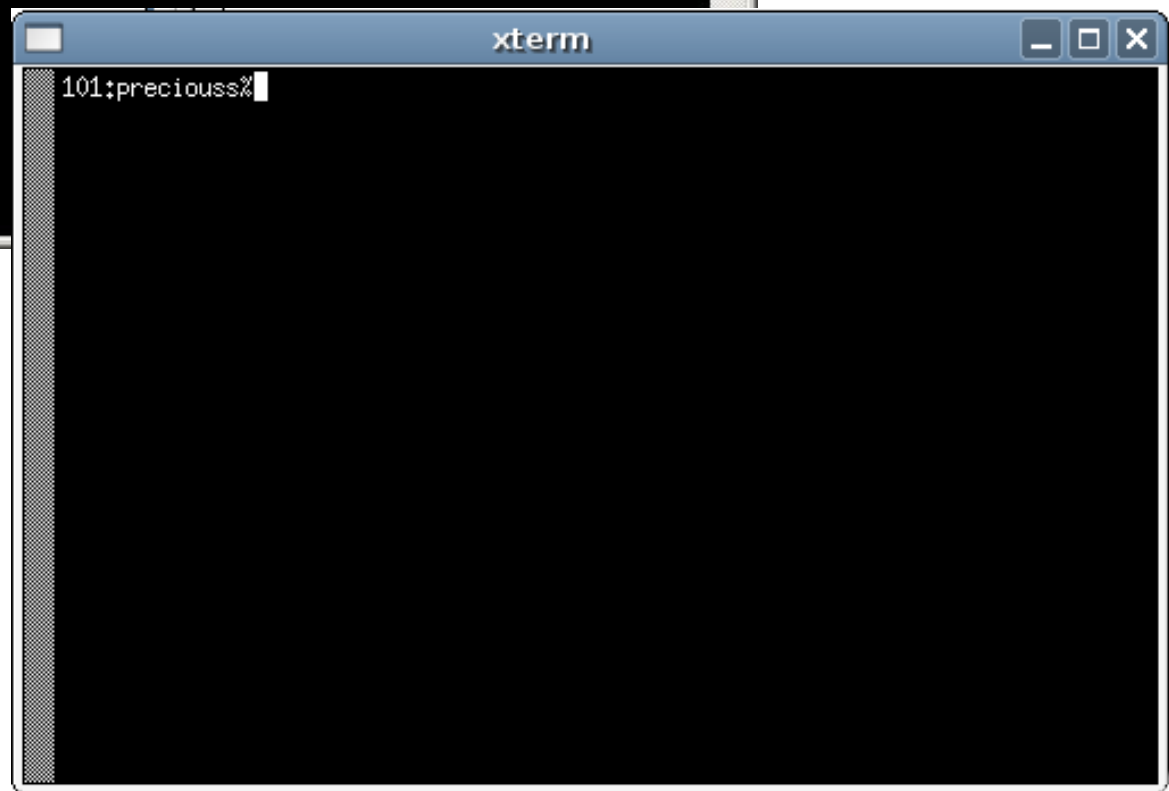
```
Automatic boot in progress: starting file system checks.  
/dev/rad0a: file system is clean; not checking  
setting tty flags  
starting network  
add net default: gateway 192.168.12.1  
starting system logger  
starting named  
starting rpc daemons: portmap rdate.  
savecore: no core dump  
checking quotas: done.  
building ps databases: kva dev.  
clearing /tmp  
starting pre-securelevel daemons:.  
setting kernel security level: kern.securelevel: 0 -> 1  
preserving editor files  
creating runtime link editor directory cache.  
starting network daemons: sendmail inetd sshd.  
starting local daemons:.  
standard daemons: cron.  
Tue Jan 1 09:23:16 EST 2002  
  
OpenBSD/vax (vax4) (console)  
  
login: _
```

WYSE  
1000

A screenshot of a Windows Command Prompt window. The title bar reads "c:\ Invite de commandes". The window content shows the following text:

```
Microsoft Windows XP [version 5.1.2600]
(C) Copyright 1985-2001 Microsoft Corp.

C:\Documents and Settings\Administrateur>
```

A screenshot of an xterm window. The title bar reads "xterm". The window content shows the following text:

```
101:precious%
```



PRECIOUS

IF IP.xls



OPENGEM5.zip

fdfullcd.iso

windows

wyklad

osidle210.zip

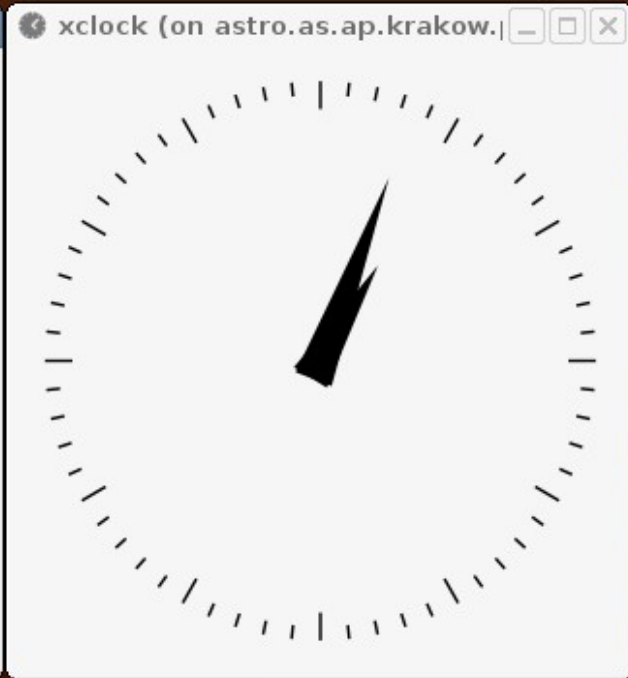
wqght.zip

```

101:precious%xclock &
[1] 13167
102:precious%Warning: Missing
Warning: Unable to load any u

102:precious%ssh -X astro.as
greg@astro.as.ap.krakow.pl's
Permission denied, please try
greg@astro.as.ap.krakow.pl's
Last login: Sat Mar 31 20:33:
xterm
101:astro%xclock &
[1] 7521
102:astro%

```



Start



Control Panel

Control Panel window showing various system settings icons:

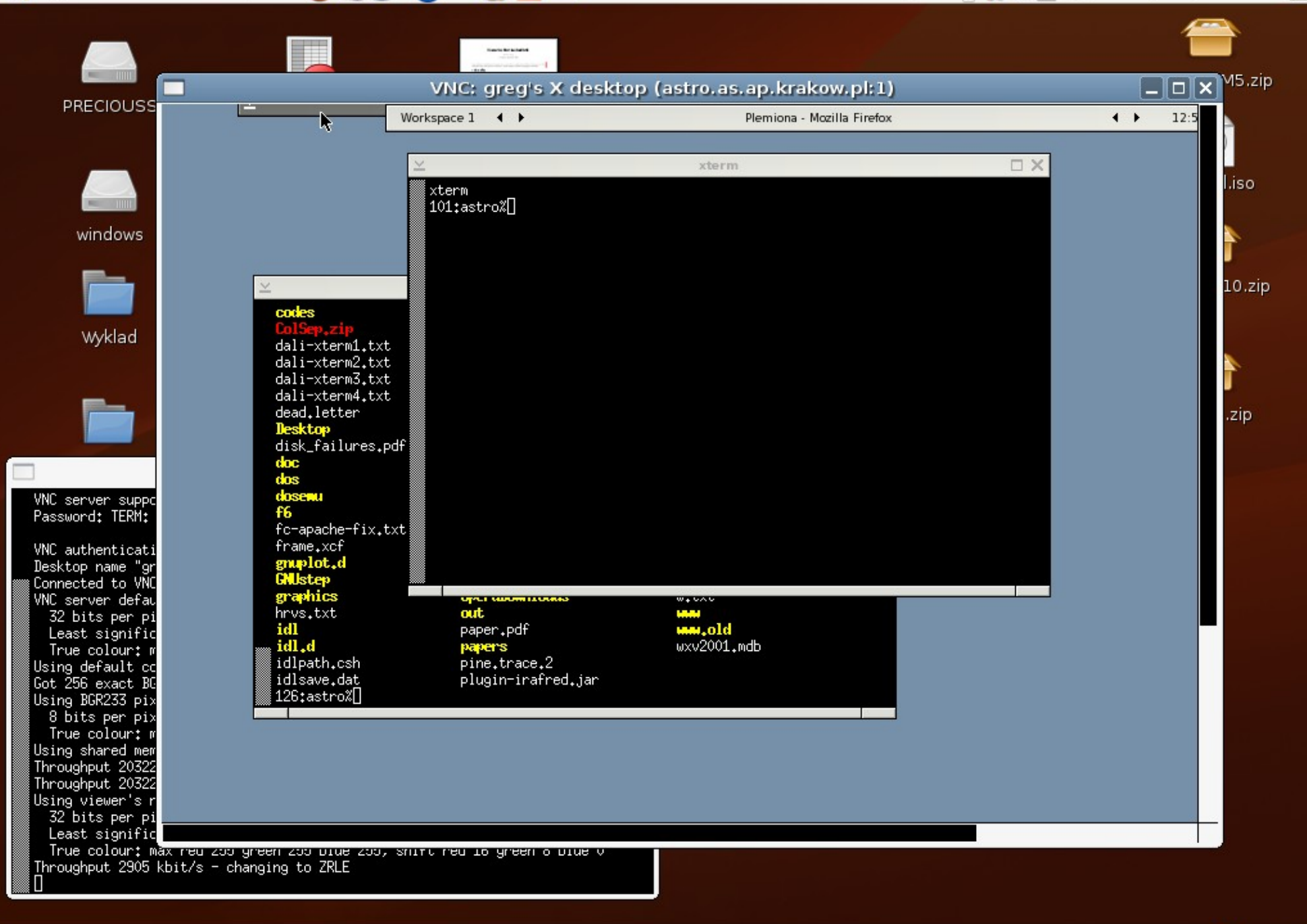
- Add Hardware
- Add or Remov...
- Administrative Tools
- Automatic Updates
- Date and Time
- Display
- Folder Options
- Fonts
- Game Controllers
- Internet Options
- Java
- Keyboard
- Licensing
- Mouse
- Network Connections
- Phone and Modem ...
- Portable Media Devices
- Power Options
- Printers and Faxes
- Regional and Language ...
- Scanners and Cameras
- Scheduled Tasks
- Sounds and Audio Devices
- Speech
- Stored User Names a...
- System
- Taskbar and Start Menu
- Windows Firewall

28 objects

My Computer



2:22 PM  
Monday  
6/19/2006



```

VNC server supp
Password: TERM:

VNC authenticati
Desktop name "gr
Connected to VNC
VNC server defau
32 bits per pi
Least signific
True colour: m
Using default cc
Got 256 exact BG
Using BGR233 pix
8 bits per pix
True colour: m
Using shared mer
Throughput 20322
Throughput 20322
Using viewer's r
32 bits per pi
Least signific
True colour: max red 255 green 255 blue 255, shift red 16 green 6 blue 0
Throughput 2905 kbit/s - changing to ZRLE

```

```

codes
ColSep.zip
dali-xterm1.txt
dali-xterm2.txt
dali-xterm3.txt
dali-xterm4.txt
dead.letter
Desktop
disk_failures.pdf
doc
dos
dosemu
f6
fc-apache-fix.txt
frame.xcf
gnuplot.d
GNUstep
graphics
hrvs.txt
idl
idl.d
idlpsh.csh
idlsave.dat
126:astro%

```

```

xterm
101:astro%

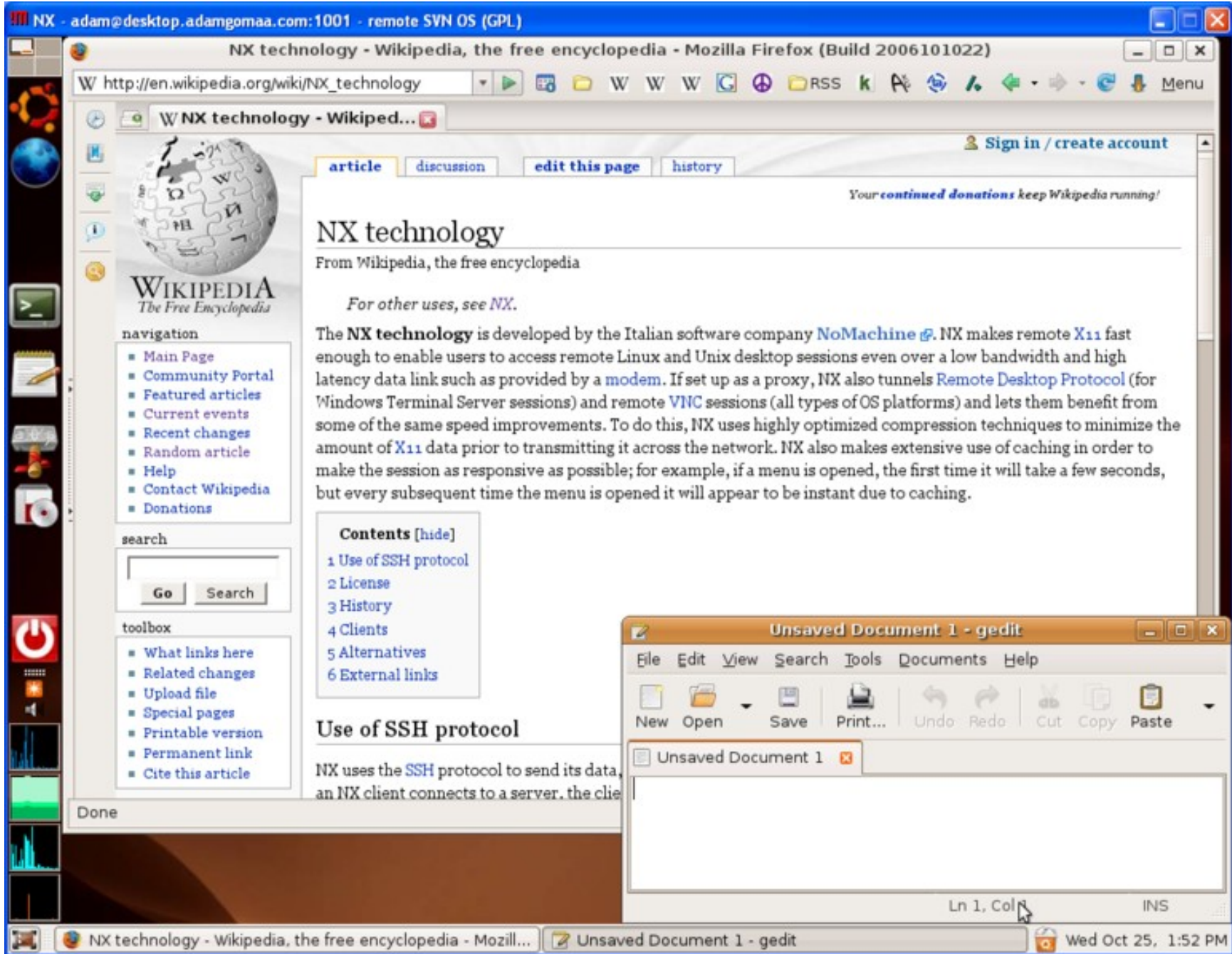
```

```

out
paper.pdf
papers
pine.trace.2
plugin-irafred.jar
www
www.old
wxv2001.mdb

```





- navigation
- Main Page
  - Community Portal
  - Featured articles
  - Current events
  - Recent changes
  - Random article
  - Help
  - Contact Wikipedia
  - Donations

search

Go Search

- toolbox
- What links here
  - Related changes
  - Upload file
  - Special pages
  - Printable version
  - Permanent link
  - Cite this article

article discussion edit this page history

Your continued donations keep Wikipedia running!

# NX technology

From Wikipedia, the free encyclopedia

For other uses, see NX.

The **NX technology** is developed by the Italian software company [NoMachine](#). NX makes remote X11 fast enough to enable users to access remote Linux and Unix desktop sessions even over a low bandwidth and high latency data link such as provided by a [modem](#). If set up as a proxy, NX also tunnels [Remote Desktop Protocol](#) (for Windows Terminal Server sessions) and remote [VNC](#) sessions (all types of OS platforms) and lets them benefit from some of the same speed improvements. To do this, NX uses highly optimized compression techniques to minimize the amount of X11 data prior to transmitting it across the network. NX also makes extensive use of caching in order to make the session as responsive as possible; for example, if a menu is opened, the first time it will take a few seconds, but every subsequent time the menu is opened it will appear to be instant due to caching.

- Contents [hide]
- 1 Use of SSH protocol
  - 2 License
  - 3 History
  - 4 Clients
  - 5 Alternatives
  - 6 External links

## Use of SSH protocol

NX uses the [SSH](#) protocol to send its data, an NX client connects to a server, the client

Unsaved Document 1 - gedit

File Edit View Search Tools Documents Help

New Open Save Print... Undo Redo Cut Copy Paste

Unsaved Document 1

Ln 1, Col INS

Done